



Strategic Plan Initiative

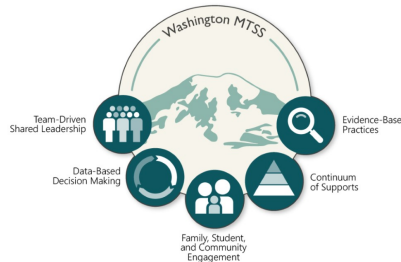
SUPPORTIVE CULTURE — A.2.b: Enhance Positive Behavioral Interventions and Supports at every school, integrating social-emotional learning support.



SUMMARY — By creating research-based, culturally engaging opportunities where each student feels safe to engage and socially identify, this initiative links to the Supportive Culture theme of the strategic plan, which supports the six priority outcomes.

COMPLETED:

- ✓ Establish cross-department training and collaboration
- ✓ Establish District Advisory Team
- ✓ Collect base-line stakeholder data



RESOURCES:

- MTSS overview link
- Panorama survey information
- Strategic Plan link

“Multi-Tiered System of Supports (MTSS) helps to ensure students benefit from nurturing environments and equitable access to instruction and supports that are differentiated to meet their unique needs.” -OSPI

STUDENT IMPACT:

- Supports the whole child: academic, social-emotional, behavioral and attendance.
- Increases equitable and differentiated access to learning and intervention.
- Provides regular progress monitoring to ensure student growth.

STAFF IMPACT:

- School-wide expectations are systematically taught and retaught
- Data is used to make decisions about individual students and school-wide needs
- The district's Five Core Principals of PBIS and the Benchmark of Implementation provides schools with a clear pathway toward success

QUESTIONS? PLEASE CONTACT:

Mimi Brown, 425-385-4061, MBrown@everettsd.org